

# Voyager® Duo



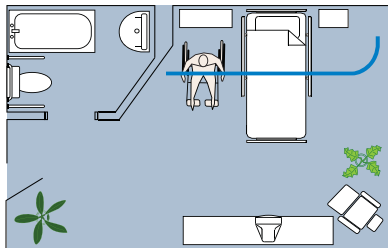
BHM MEDICAL

BHM Medical products are designed with the caregiver and the end user in mind. Our products reduce potential risk of injury while increasing the quality of care to the person with reduced mobility. Manual transfers without the proper equipment is identified as the most common cause for back injuries to the caregiver.

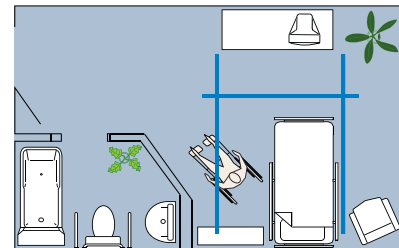
BHM Medical ceiling track system can be integrated into any home environment. A simple straight track designed provides basic point-to-point transfers.

The addition of a curved track allows the unit to conveniently be charged in and out-of-the-way location near the wall. Other layouts such as "H" or "X-Y" styles

### Room layout



"J" shaped track system



"H" or "X-Y" track system

## Voyager® Duo

The voyager Duo is the safe effortless solution to lifting and transferring people challenged by reduced mobility. The Voyager Duo enables safe transfers from bed to wheelchair, to bathtub or to the toilet.

The exclusive feature of a Dual Lifting Capacity (220lb/ 100kg or 440lb/ 200kg) makes the Voyager Duo a flexible, cost effective transferring solution for homecare, group homes and adult day-care centers.

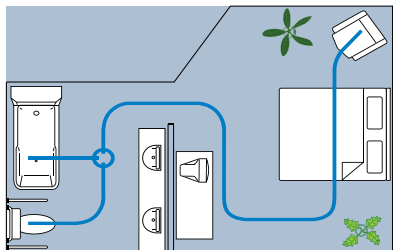
BHM Medical's new safe and simplified home installation method at 220lb/ 100kg allows for an easier track installation by reducing it's complexity as well as the installation time. This new, cost effective engineer-approved installation method translates into a more economical installation by minimizing the work time in your home.



220lb (100kg) or 440 lb (200kg)



provide entire single room coverage, or combined with additional tracks and accessories, can be used for home coverage.



Room to Room track system

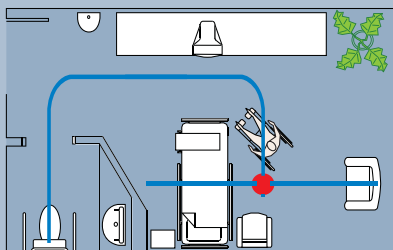


Turntable

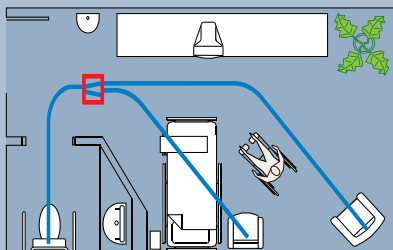


Exchanger

### Track accessories



**Turntable** allows the main track to intersect a secondary track. The Turntable requires no power connection of its own – the Voyager Duo power-sharing feature activates the Turntable.



**Exchanger** functions like a junction in the road. It allows the lift access from one care area to separate care areas – the Voyager Duo's power-sharing feature activates the Exchanger.





We believe when patients feel safe,  
they feel better.

At BHM Medical, we strive to have a positive impact on the Quality of Life for people with reduced mobility and their caregivers. We aim to reduce the strain

and complexity of lifting/ transferring through education and the use of our professional, ergonomically designed lifting technology.

### New handset

The Voyager Duo's new ergonomic handset offers comfortable handling and ease-to-use. An industry standard approved waterproof casing (IPX7), as well as Newly-Designed touch pad, ensure years of reliable use. The new stretch resistant cable, which will retract to its original length, makes the new handset extremely user friendly.



### Loop system

BHM slings feature the universally recognized "loop" design to easily attach the sling to the spreader bar. For additional safety, BHM Medical, has incorporated security latches into the spreader bar to keep the loops securely in place.



Description	Functions
<b>SAFE WORKING LOAD 220 LB (100 KG) OR CAPACITY 440 LB (200 KG)</b>	
4 Way	Powered up/down/left/right
2 Way	Powered up/down

Product information
<b>GENERAL</b>
Weight: 28 lbs/ 12.7 kg
Handset: Waterproof protection for temporary immersion
ABS: Fire retardant, Heat resistant
Strap & Motor Easily Accessible - Facilitates maintenance:
Change the strap in 10 minutes, change circuit board in less time
Soft start & stop movement
<b>SAFETY FEATURES</b>
Emergency lowering device: Manual & Electric
Emergency Stop Pull Cord: Accessible to both end user and Caregiver
Emergency Stop/ Anti-twist Mechanism for strap
<b>BATTERY FEATURES</b>
Battery type : Rechargeable

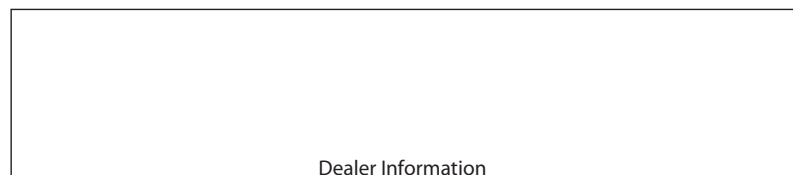
## Voyager® Duo

CANADA  
2001 Tanguay, Magog QC J1X 5Y5  
☎ 819 868-0441 • 1 800 868-0441  
☎ 819 868-2249  
bhm@bhm-medical.com



BHM Medical and the environment  
Several measures more respectful of the environment have already been implanted in our offices. Small gestures to major changes, everything is important and makes a real difference.

[www.bhm-medical.com](http://www.bhm-medical.com)



Dealer Information



C US



C US



CE