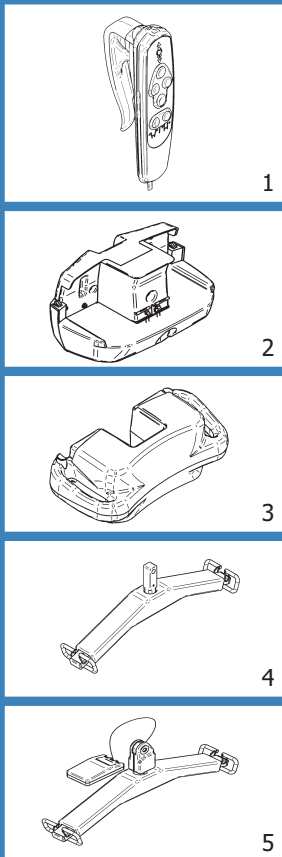


Total Lift

# PRODUCT	DESCRIPTION	MARKET
#87000001	Floor Lift - Medi Lifter 4 with power base	USA
#87000101	Floor Lift - Medi Lifter 4 with power base & scale	USA
#87000008	Floor Lift - Medi Lifter 4 with power base	Europe & United Kingdom

# Medi Lifter 4

Lifting capacity:  
500 lb / 225 kg / 35.43 st



√ = Included / O = Optional

# PART	DESCRIPTION	#87000001	#87000101	#87000008
1	#700.13630 Hand Control - Power base	√	√	√
2	#700.16051 Wall charger - USA	O	O	
2	#700.16055 Wall charger - United Kingdom			O
2	#700.16053 Wall charger - Europe			O
3	#700.16200 Battery Pack	√	√	√
4	#700.21100 Spreader bar	√	O	√
5	#700.21110 Spreader bar with scale	O	√	O

ML4	CONTROL BOX WITH INTEGRATED CHARGER	
#87000001	#700.16000.2	
#87000101	#700.16000.2	
#87000008	#700.16000.2	

SUGGESTED SLINGS & STRETCHERS	Hammock & Hammock 6	Hygienic	Quick Fit	Band	Chest	Total transfer	Combi	Repositioning	Bariatric	Walking	Soft	Universal	Morgue
	Slings										Stretchers		
	√	√	√				√	√		√	√	√	√

(For more details, look into the Sling Section)

### FEATURES

Weight	53 kg / 116.6 lb / 8.35 st
Lifting capacity	225 kg / 500 lb / 35.43 st
Soft start & stop movement	

### SAFETY FEATURES

Dual controls	
Emergency Shut-Off	
Manual emergency lowering device	Slowly drop to the desired level

### TECHNICAL SPECIFICATIONS

Control Box - CSA, UL & CE approved

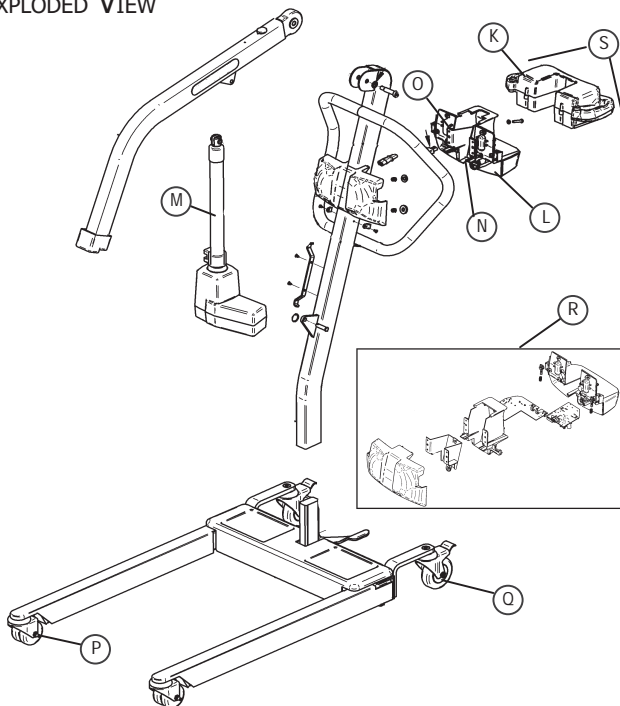
### BATTERY SPECIFICATIONS

Rechargeable & removable battery pack	(2X) 12VDC, 5Ah
Charger	Integrated, plug in lift
Battery capacity with load of 90 kg / 200 lb / 14.17 st	Up to 100 Lifts per charge
Low battery warning indicator	Visual
Charge input	90-240 Vac, 50-60 Hz, 27 VA
Charge indicator	Visual
Charging time	3-4 hours

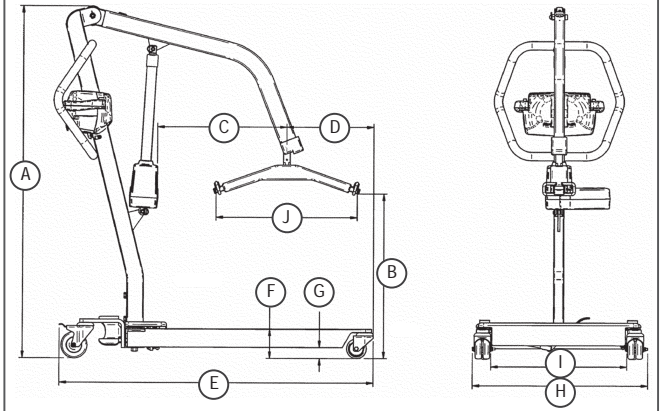
### BASE

Material	Steel
Cab	Fire retardant plastic
Finish	Powder Coat White

### EXPLODED VIEW



### DIMENSIONS

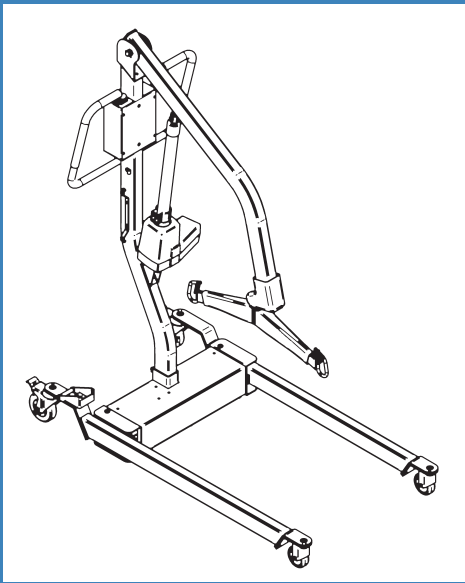


### DIMENSIONS

DESCRIPTION	HOISTING HEIGHT AT :					
	MIN		MID		MAX	
	MM	IN	MM	IN	MM	IN
A Total lift height	1334	52.5	1522	59.9	2072	81.6
B Hoisting height at connecting points	624	24.6	1156	45.5	1876	73.6
C CSP Hoisting reach	493	19.4	639	25.2	308	12.1
D CSP from base end	332	13.1	180	7.1	536	21.1
	mm			in		
E Base total length	1196		47.1			
F Base height	1111		4.4			
G Base floor clearance	41		1.6			
H External base width (legs closed)	667		26.3			
H External base width (legs open)	1013		39.9			
I Internal base width (legs closed)	517		20.4			
I Internal base width (legs open)	923		36.3			
J Connecting points distance	537		21.1			
Turning radius	880		34.6			
Minimum door requirement	660		26.0			

### COMMON SPARE PARTS

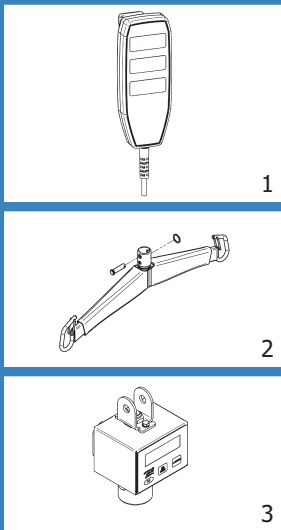
K	#403.10500 (X2)	Battery
L	#492.0045-3	Circuit board - Control box
M	#E6520	Actuator
N	#492.00031-4	Circuit board - Charger
O	#700.16020.2	Control box with integrated charger - Power base
P	#000.20420	Caster front
Q	#000.20400	Caster back
R	#700.16051	Wall charger - USA
R	#700.16055	Wall charger - United Kingdom
R	#700.16053	Wall charger - Europe
S	#700.16200	Battery Pack



Total Lift

# Ergolift 2

Lifting capacity:  
400 lb / 180 kg / 28.66 st



# PRODUCT	DESCRIPTION	MARKET
#ERGOLIFT-2	Floor Lift - Ergolift 400 lb	North America
#ERGOLIFT-2 + SC	Floor Lift - Ergolift 400 lb & scale	North America

√ = Included / O = Optional

# PART	DESCRIPTION	#ERGOLIFT-2	#ERGOLIFT-2 + SC
1	#A6800 Hand Control	√	√
2	#700.05466 Spreader bar	√	
3	#700.00510 Scale Unit	O	√

### ERGOLIFT 2 CONTROL BOX WITH INTEGRATED CHARGER

#ERGOLIFT-2	#A6700
#ERGOLIFT-2 + SC	#A6700

SUGGESTED SLINGS & STRETCHERS	Hammock & Hammock 6	Hygienic	Quick Fit	Bend	Chest	Total transfer	Combi	Repositioning	Bariatric	Walking	Soft	Universal	Morgue
	Slings											Stretchers	
	√	√	√					√	√		√	√	√

(For more details, look into the Sling Section)

### FEATURES

Weight	53 kg / 116.6 lb / 8.35 st
Lifting capacity	180 kg / 400 lb / 28.66 st
Soft start & stop movement	

### SAFETY FEATURES

Dual controls	
Emergency Shut-Off	
Manual emergency lowering device	Slowly drop to the desired level

### TECHNICAL SPECIFICATIONS

Control box - CSA, UL & CE approved	
-------------------------------------	--

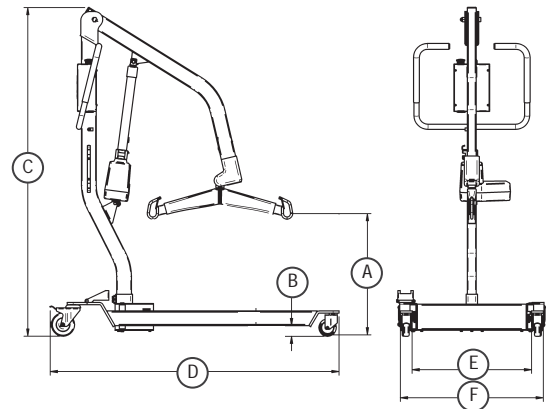
### BATTERY SPECIFICATIONS

Rechargeable battery pack	(2X) 12VDC, 7 Ah
Charger	Integrated, plug in lift
Battery capacity with load of 180 kg / 400 lb / 28.66 st	Up to 80-100 Lifts per charge
Low battery warning indicator	Visual
Charge input	120 Vac, 50-60 Hz, 0.5 A max.
Charge indicator	Visual
Charging time	3-4 hours

### BASE

Material	Steel
Cab	Fire retardant plastic
Finish	Powder Coat White

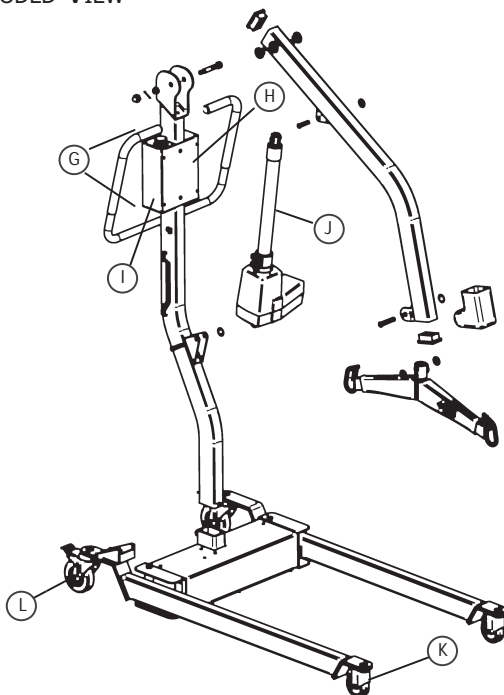
### DIMENSIONS



### DIMENSIONS

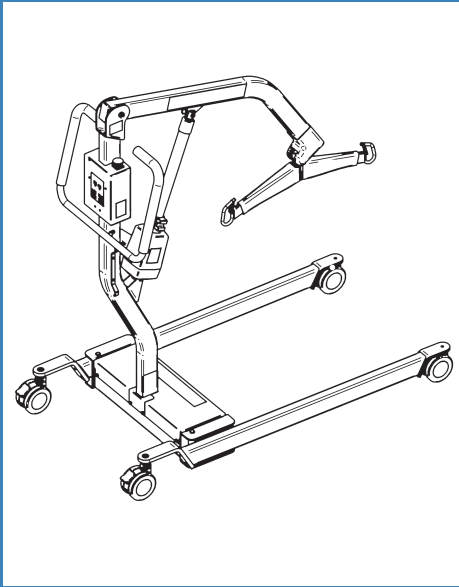
DESCRIPTION	HOISTING HEIGHT AT :			
	Min		Max	
	cm	in	cm	in
A Hoisting height at connecting points	52	20.5	179	70.5
	cm		in	
B Base height	11		4.25	
C Total lift height	140		55	
D Base total length	125		49	
E External base width (legs closed)	61		24	
E External base width (legs open)	108		42.5	
F Internal base width (legs closed)	51		20	
F Internal base width (legs open)	98		38.5	

### EXPLODED VIEW



### COMMON SPARE PARTS

G #A6700	Control box with integrated charger
H #A0150 (X2)	Battery
I #E6760-4F	Circuit board - Charger
J #E6520	Actuator
K #000.06000	Caster Front
L #000.06010	Caster back

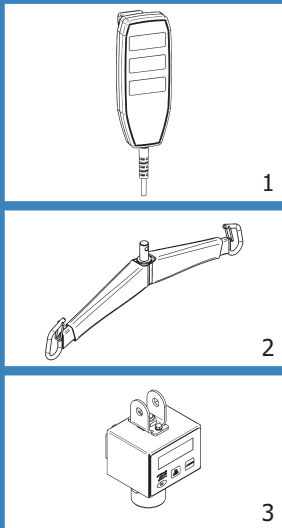


Total Lift

# PRODUCT	DESCRIPTION	MARKET
#88570001	Floor Lift - Ergolift-600 WO (Wide opening)	North America
#88570101	Floor Lift - Ergolift-600 WO (Wide opening) & scale	North America

# Ergolift-600 WO

Lifting capacity:  
600 lb / 272 kg / 42.86 st



√ = Included / O = Optional

# PART	DESCRIPTION	#88570001	#88570101
1	#A6800 Hand Control	√	√
2	#700.05464 Spreader Bar	√	
3	#700.00510 Scale Unit		√

ERGO LIFT-600 WO		CONTROL BOX WITH INTEGRATED CHARGER	
#88570001	#A6710		
#88570101	#A6710		

SUGGESTED SLINGS & STRETCHERS	Hammock & Hammock 6	Hygienic	Quick Fit	Band	Chest	Total transfer	Combi	Repositioning	Bariatric	Walking	Soft	Universal	Morgue
	Slings										Stretchers		
	√	√	√				√	√	√	√	√	√	√

(For more details, look into the Sling Section)

**FEATURES**

Weight	53 kg / 116.6 lb / 8.33 st
Lifting capacity	272 kg / 600 lb / 42.86 st
Soft start & stop movement	

**SAFETY FEATURES**

Dual controls	
Emergency Shut-Off	
Manual emergency lowering device	Slowly drop to the desired level

**TECHNICAL SPECIFICATIONS**

Control box - CSA, UL & CE approved	
-------------------------------------	--

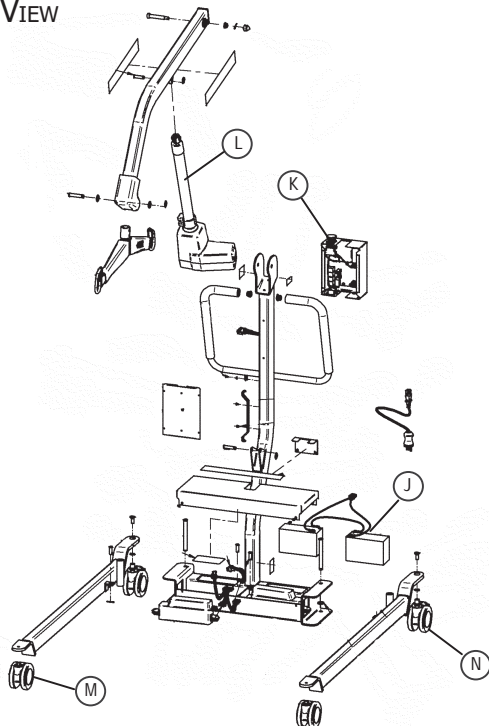
**BATTERY SPECIFICATIONS**

Rechargeable & removable battery pack	(2X) 12VDC, 7Ah
Charger	Integrated, plug in lift
Battery capacity with load of 180 kg / 400 lb / 28.57 st	Up to 100 Lifts per charge
Low battery warning indicator	Visual
Charge input	120 Vac, 50-60 Hz, 0.5 A max.
Charge indicator	Visual
Charging time	3-4 hours

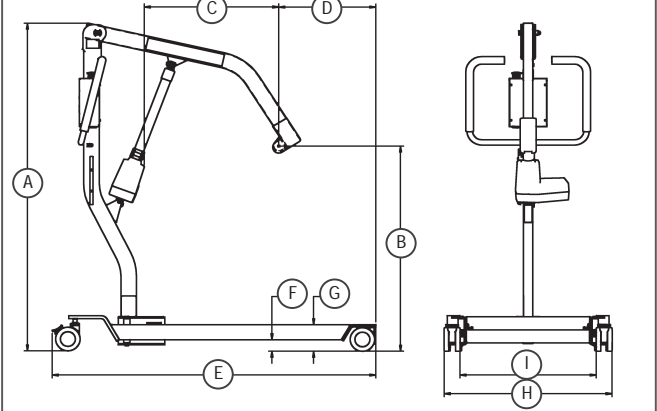
**BASE**

Material	Steel
Cab	Fire retardant plastic
Finish	Powder Coat White

**EXPLODED VIEW**



**DIMENSIONS**

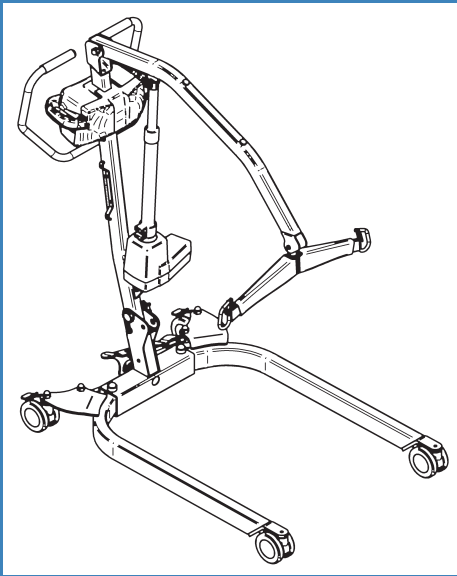


**DIMENSIONS**

DESCRIPTION	HOISTING HEIGHT AT :			
	MIN		MAX	
	MM	IN	MM	IN
A Total lift height	1385	54.5	1931	76
B Hoisting height at connecting points	867.8	34.1	1888.4	74.3
C CSP Hoisting reach	548.8	21.6	501.9	19.7
D CSP from base end	396.3	15.6	438.7	17.2
	mm		in	
E Base total length	1321.5		52	
F Base height	110.6		4.3	
G Base floor clearance	47.1		1.8	
H External base width (legs open)	1264.8		49.8	
H External base width (legs closed)	685.9		27	
I Internal base width (legs open)	1140		44.8	
I Internal base width (legs closed)	555.9		21.8	
Turning radius	880		34.6	
Minimum door requirement	660		26	

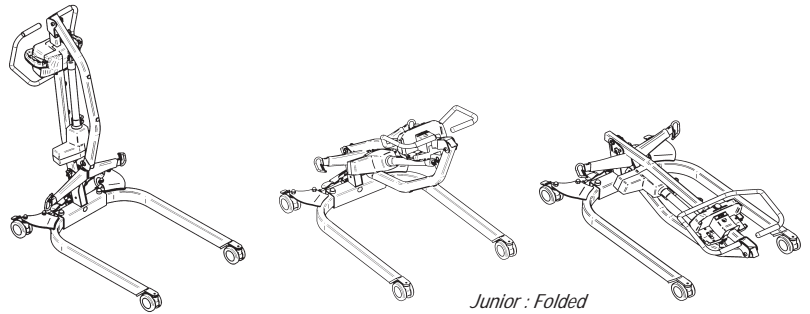
**COMMON SPARE PARTS**

J	#A0150 (X2)	Battery
K	#E6760-4F-600	Circuit board - Control box
L	#E6520	Actuator
M	#000.20430	Caster Front
N	#000.20440	Caster back



Total Folding Lift

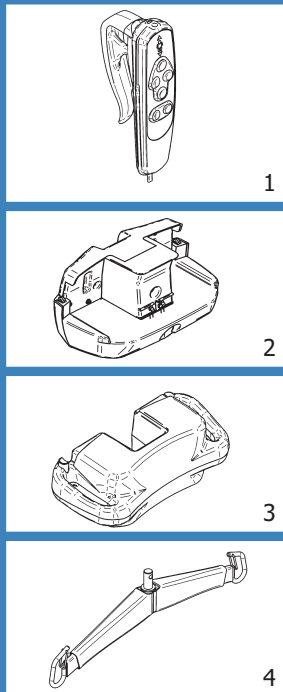
# PRODUCT	DESCRIPTION	MARKET
#82101041	Folding floor lift - Junior	North America
#82101044	Folding floor lift - Junior	Australia
#82101048	Folding floor lift - Junior	Europe & United Kingdom



Junior : Folded

# Junior

Lifting capacity:  
350 lb / 159 kg / 25.04 st



√ = Included / O = Optional

# PART	DESCRIPTION	#82101041	#82101044	#82101048
1	#700.13610 Hand Control	√	√	√
2	#700.16051 Wall charger - North America	O		
2	#700.16053 Wall charger - Europe			O
2	#700.16054 Wall charger - Australia		O	
2	#700.16055 Wall charger - United Kingdom			O
3	#700.16200 Battery Pack	√	√	√
4	#700.05496 Spreader bar	√	√	√

JUNIOR	CONTROL BOX WITH INTEGRATED CHARGER
#82101041	#700.16008.2
#82101044	#700.16008.2
#82101048	#700.16008.2

SUGGESTED SLINGS & STRETCHERS	Hammock & Hammock 6	Hygienic	Quick Fit	Band	Chest	Total transfer	Combi	Repositioning	Bariatric	Walking	Soft	Universal	Morgue
	Slings										Stretchers		
	√	√	√				√	√					

(For more details, look into the Sling Section)

### FEATURES

Weight	39.6 kg / 87.12 lb / 6.24 st
Lifting capacity	159 kg / 350 lb / 25.04 st
Soft start & stop movement	

### SAFETY FEATURES

Dual controls	
Emergency Shut-Off	
Manual emergency lowering device	Slowly drop to the desired level

### TECHNICAL SPECIFICATIONS

Control box - CSA, UL & CE approved

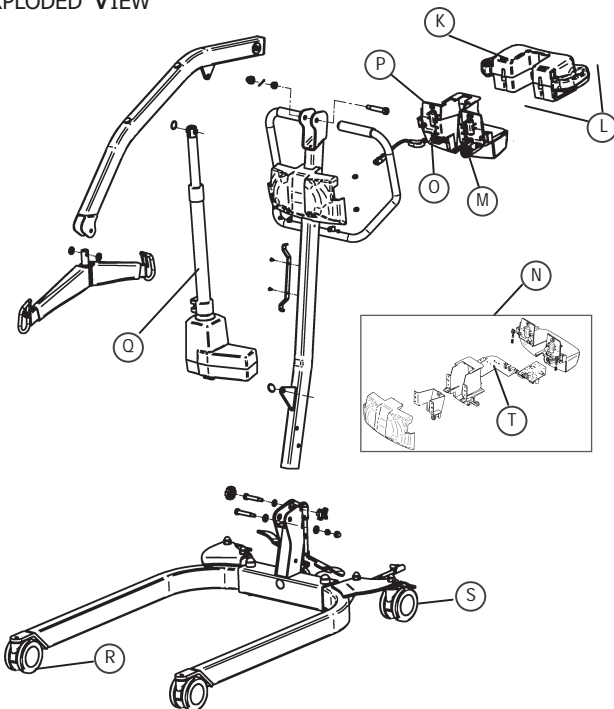
### BATTERY SPECIFICATIONS

Rechargeable & removable battery pack	(2X) 12Vdc, 5Ah
Charger	Integrated, plug in lift
Battery capacity with load of 90 kg / 200 lb / 14.17 st	Up to 100 Lifts per charge
Low battery warning indicator	Visual
Charge input	90-240 Vac, 50-60 Hz, 27 VA
Charge indicator	Visual
Charging time	3-4 hours

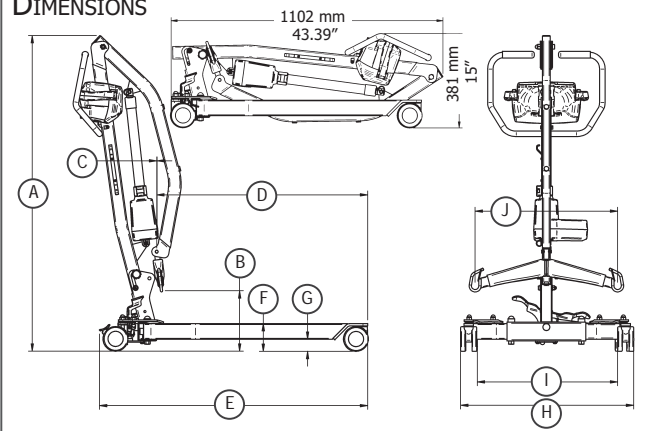
### BASE

Material	Steel
Cab	Fire retardant plastic
Finish	Powder Coat Beige

### EXPLODED VIEW



### DIMENSIONS

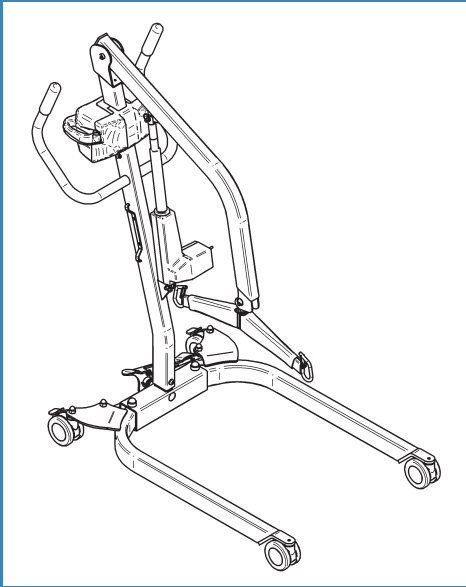


### DIMENSIONS

DESCRIPTION	HOISTING HEIGHT AT :			
	MIN		MAX	
	MM	IN	MM	IN
A Total lift height	1278	50.31	1771	69.72
B Hoisting height at connecting points	246	9.69	1618	63.7
C CSP Hoisting reach	3	0.12	452	17.8
D CSP from base end	851	33.5	400	15.75
		mm		in
E Base total length	1082		42.6	
F Base height	112		4.4	
G Base floor clearance	48		1.9	
H External base width (legs closed)	693		27.3	
H External base width (legs open)	1111		43.7	
I Internal base width (legs closed)	565		22.2	
I Internal base width (legs open)	987		38.9	
J Connecting points distance	580		22.8	
	Turning radius	945		37.2
	Minimum door requirement	660		26.0

### COMMON SPARE PARTS

K	#403.10500 (X2)	Battery
L	#700.16200	Battery pack
M	#492.0045-5	Circuit board - Control box
N	#700.16051	Wall charger - North America
N	#700.16053	Wall charger - Europe
N	#700.16054	Wall charger - Australia
N	#700.16055	Wall charger - United Kingdom
O	#492.00031-4	Circuit board - Charger
P	#700.16008.2	Control box (with charger)
Q	#E6520	Actuator
R	#000.20430	Caster Front
S	#000.20435	Caster back
T	#492.00045-2	Circuit board - Wall charger

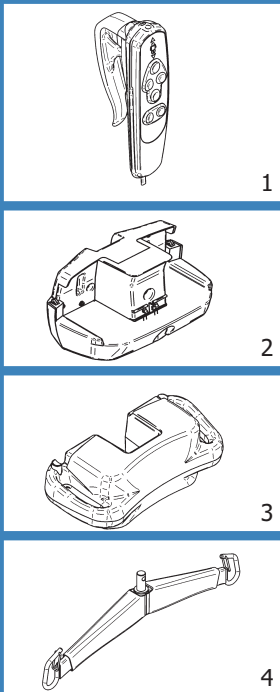


Total Lift

# Graduate

Lifting capacity:  
350 lb / 159 kg / 25.04 st

# PRODUCT	DESCRIPTION	MARKET
#82601001	Floor lift - Graduate	North America
#82601004	Floor lift - Graduate	Australia
#82601008	Floor lift - Graduate	Europe & United Kingdom



√ = Included / O = Optional

# PART	DESCRIPTION	#82601001	#82601004	#82601008
1 #700.13610	Hand Control	√	√	√
2 #700.16200	Battery Pack	√	√	√
3 #700.16051	Wall charger - North America	O		
3 #700.16053	Wall charger - Europe			O
3 #700.16054	Wall charger - Australia		O	
3 #700.16055	Wall charger - United Kingdom			O
4 #700.05496	Spreader bar	√	√	√

GRADUATE	CONTROL BOX WITH INTEGRATED CHARGER
#82601001	#700.16005.2
#82601004	#700.16005.2
#82601008	#700.16005.2

SUGGESTED SLINGS & STRETCHERS	Hammock & Hammock 6	Hygienic	Quick Fit	Band	Chest	Total transfer	Combi	Repositioning	Bariatric	Walking	Soft	Universal	Morgue
	Slings											Stretchers	
	√	√	√				√				√	√	

(For more details, look into the Sling Section)

### FEATURES

Weight	40.7 kg / 89.5 lb / 6.41 st
Lifting capacity	159 kg / 350 lb / 25.04 st
Soft start & stop movement	

### SAFETY FEATURES

Dual controls	
Emergency Shut-Off	
Manual emergency lowering device	Slowly drop to the desired level

### TECHNICAL SPECIFICATIONS

Control box - CSA, UL & CE approved

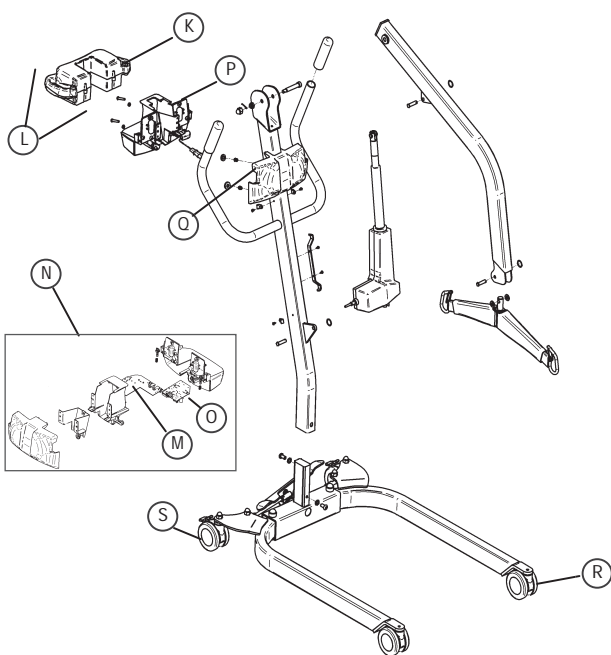
### BATTERY SPECIFICATIONS

Rechargeable & removable battery pack	(2X) 12Vdc, 5Ah
Charger	Integrated, plug in lift
Battery capacity with load of 90 kg / 200 lb / 14.17 st	Up to 100 Lifts per charge
Low battery warning indicator	Visual
Charge input	90-240 Vac, 50-60 Hz, 27 VA
Charge indicator	Visual
Charging time	3-4 hours

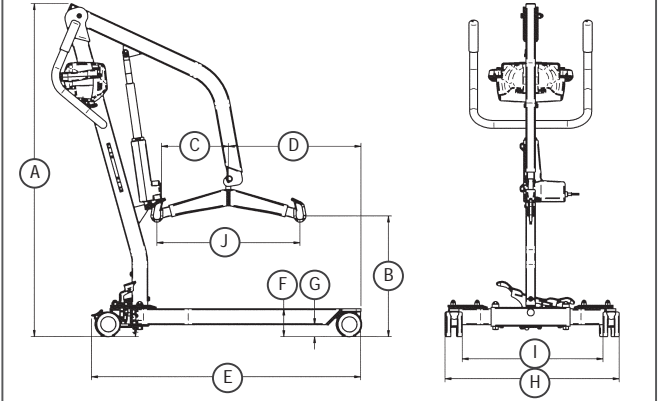
### BASE

Material	Steel
Cab	Fire retardant plastic
Finish	Powder Coat Beige

### EXPLODED VIEW



### DIMENSIONS



### DIMENSIONS

DESCRIPTION	HOISTING HEIGHT AT :			
	MIN		MAX	
	MM	IN	MM	IN
A Total lift height	1350	53.1	1960	77.2
B Hoisting height at connecting points	490	19.3	1765	69.5
C CSP Hoisting reach	270	10.6	335	13.2
D CSP from base end	535	21.1	470	18.5
	mm		in	
E Base total length	1090		42.9	
F Base height	112		4.4	
G Base floor clearance	48		1.9	
H External base width (legs closed)	700		27.6	
H External base width (legs open)	1110		43.7	
I Internal base width (legs closed)	570		22.4	
I Internal base width (legs open)	990		39.0	
J Connecting points distance	580		22.8	
Turning radius	945		37.2	
Minimum door requirement	660		26.0	

### COMMON SPARE PARTS

K	#403.10500 (X2)	Battery
L	#700.16200	Battery pack
M	#492.0045-3	Circuit board - Control box
N	#700.16051	Wall charger - North America
N	#700.16053	Wall charger - Europe
N	#700.16054	Wall charger - Australia
N	#700.16055	Wall charger - United Kingdom
O	#492.00031-4	Circuit board - Charger
P	#700.16005.2	Control box (with charger)
Q	#E6520	Actuator
R	#000.20430	Caster Front
S	#000.20435	Caster back
T	#492.00045-2	Circuit board - Wall charger